

# Bernardo 354 Side Table

Design Rodolfo Dordoni

Technical Information



BERNARDO side table is a precious accessory boasting a linear and discreet design. The characteristic Simplon white stone base and the powder coated stainless steel, make BERNARDO extremely stable and suitable for every space, both inside and outside the house.

## TECHNICAL INFORMATION

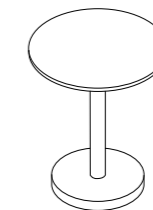
**DESCRIPTION**  
Side table for outdoor use.

**STRUCTURE**  
Powder coated stainless steel, stone base (Simplon white)

**TOP**  
Gres or glazed gres

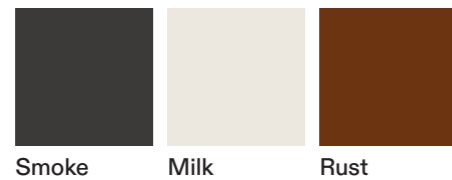
WEIGHT	
Gres top	18 kg
Glazed gres top	21 kg

**DIMENSION**  
Ø 45 x H 54 cm  
Ø17" ¾ x H 21" ¼



## Materials

### METAL BASE/TOP

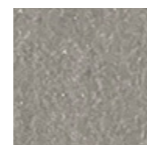


Smoke

Milk

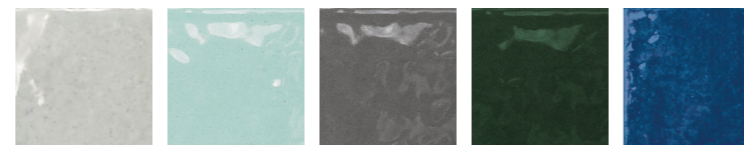
Rust

### TOP / GRES



Grey

### TOP / GLAZED GRES



Ice

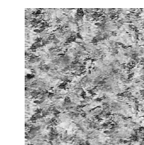
Water

Storm

Forest

Sapphire

### BASE



Simplon white stone